



# Newsletter

## Are You in a [Horizontal] Mining Frame of Mind?

The SPE Central Arkansas Study Group welcomes presenter Philip C. Crouse on Thursday, September 24, 2009, from **12:00 noon** until **1:30 p.m.** at the Faulkner Country Natural Resources Center located at 110 S. Amity Road in Conway, Arkansas. The topic will be: *Horizontal Well Technology Developments and More Complex Approaches using Extended Reach, Multilateral, UBD, and CT Technologies into the Enterprise Asset Base – Are You in a Mining Frame of Mind?* To prepare for the presentation, some recommended reading can be found on the internet. A copy of the nine page technical paper discussing the application and need for advanced multilateral technologies and strategies can be found at: [www.netl.doe.gov/publications/proceedings/97/97ng/ng97\\_pdf/NG2-5.PDF](http://www.netl.doe.gov/publications/proceedings/97/97ng/ng97_pdf/NG2-5.PDF). The eight page technical paper titled: *An Investigative Study on Horizontal Well and Extended Reach Technologies with Reported Problem Areas and Operational Practice in North America and Europe* can be purchased for six dollars at: [www.onepetro.org/mslib/servlet/onepetropreview?id=00035054&soc=SPE](http://www.onepetro.org/mslib/servlet/onepetropreview?id=00035054&soc=SPE).

### About Our Presenter: Philip C. Crouse

Philip C. Crouse is the founder and president of Philip C. Crouse and Associates, Inc., which is celebrating its 28th year of service to the broader international petroleum community. Mr. Crouse graduated from the University of Texas at Austin in 1973 with a Bachelor of Science degree in Petroleum Engineering with honors. He continued on receiving a Masters in Business Administration in 1975. While at the university, Mr. Crouse was recognized as an outstanding student, one of 14 for an over 40,000 student body. He was a member of Pi Epsilon Tau, the petroleum engineering honor society, Omicron Delta Kappa, a campus wide honorary and scholastic society, and Phi Eta Sigma, a campus wide scholastic society representing the top 2 percent of students, and speaker (president) of the James Stephen Hogg Society which was open to 21 students campus-wide and was the University's oldest student honorary organization.



His oil career began in the fields of West Texas where he was a roustabout, served as a summer engineer, and served as a staff engineer for a variety of companies including Getty Oil, Texaco,

Humble Oil, and Atlantic Richfield. He started his full time oil career with Atlantic Richfield in Dallas, Texas in 1975. With an engineering and business background he advanced into various planning roles, which included preparing the division long range plan. In 1978 he joining Champlin Petroleum Company, and developed exploration and development strategies for the company, including engineering and scheduling of the massive Long Beach California fault blocks with surfactant flooding.

In late 1978 he joined Sun Oil Company, and represented and assisted the company in improved oil recovery methods and implementations including CO2 flooding. At this time, the US government had many price regulations in the industry. Mr. Crouse was instrumental in applying for the first exceptions granted the Sun Companies on oil properties which were receiving the lowest regulated price. In 1979, Mr. Crouse was chosen as Sun's nominee to the Conference Board Congressional Fellow program. He was subsequently chosen as one of 10 participants from the many corporate companies submitting candidates to this program, thereby becoming the youngest participant (age 28), in the program's ten year history. For the year he served as a senior staffer to the U.S. Senate Committee on the Budget. He was responsible for over a \$5.5 billion budget segment of the U.S. government for Senate direction. He worked for 8 senators of the committee and ranked third in responsibility on the committee as a senior staffer. Upon completion of the program, Mr. Crouse was chosen as one of three senate staff persons to help President Reagan's transition team in the area of agriculture, having gained many Senator's confidences during the year. He returned to Sun in early 1980, and performed various engineering and planning special projects assigned by the president of the subsidiary.

In February 1981, Mr. Crouse founded a consulting practice, Philip C. Crouse and Associates, and a Texas Schedule C Corporation, Southwest PetroCorp, Inc. (dba Philip C. Crouse and Associates, Inc.). The company is registered in the state of Texas to offer and perform engineering services in Texas (Licenses# F-2740). The company performed many types of engineering, geological, industry and marketing projects and presentations in over 30 countries including the United States, Canada, Brazil, China, England, Saudi Arabia, France and Japan. Since 1988, the company has been actively engaged in horizontal well technology and since 1993 the company has been actively engaged with coiled tubing, multilateral, and underbalanced drilling technologies. Mr. Crouse is a recognized industry expert in horizontal well technology, maintaining one of the largest applications data bases in the world.

He was regularly engaged from 1989-1999, over a decade by Japan Drilling Company and Japan National Oil Corporation to develop industry status, position and problems with this technology from drilling, reservoir, production, geological, and other technical areas. The commissions with the Japanese started with work for the Japanese oil company, Arabian Oil Company. Mr. Crouse designed new horizontal completions in Neutral Zone (Middle East) new wells which turned out extremely successful. In 1996, Mr. Crouse was under a major funded contract with Japan National Oil Company to review developments in underbalanced drilling technology. The study encompassed direct interviews with operators engaged in underbalanced drilling technologies, and development of a worldwide literature base with easy computer reference. The project included thirteen major areas of survey and study including drilling processes, design, surface equipment, and problems with countermeasures.

Philip C. Crouse and Associates, Inc. through its division called Petroleum Network Education Conferences™ (PNEC) has organized over 50 conferences in the horizontal well, emerging

technologies and information technology areas since 1988. The conferences are recognized by companies throughout the world for their professional quality and content. Over 50 countries have sent personnel to be delegates of the conferences. His conferences have reached over 10,000 attendees, with over 2.5 million pieces of direct mail advertising events and short courses in the industry. The company also has managed meetings for corporations, including Schlumberger's Forum client meetings and their internal InterChange series meeting administration.

During more than twenty years of direct work with new technologies, the company possesses the latest techniques and technology which has been applied worldwide in industry. The company philosophy has been to use a conservative approach for companies just starting to use horizontal well or other technologies or management strategies.

The company also has five technical courses: Horizontal Well and Extended Reach Technology Applications; Horizontal Well Economics; Monitoring and Geosteering of Horizontal and Complex Design Wells; Underbalanced Drilling Technology; and Multilateral Well Technology.

Mr. Crouse is a registered professional engineer and has been honored and recognized for his accomplishments by TSPE (Texas Society of Professional Engineers) for his contributions to petroleum engineering in 1985, and accomplishments to the field of engineering in 1992 (one of only two petroleum engineers at that time to receive this award in the Dallas engineering community). He is a life member of the Society of Petroleum Engineers, and achieved Distinguished Member status in 1985 at the age of 35. He has served as a director to SPE International for three years and served as a two year trustee to the AIME of New York. He is a former president of the Petroleum Engineers Club of Dallas (where he was honored as one of the youngest members to receive the Permian Pot Award) and former President of NOMADS of Dallas-Fort Worth, an organization promoting international oilfield activity. He is a member of the Society of Petroleum Evaluation Engineers, and a corporate and associate member of the Society of Exploration Geophysicists. He was also a member of the Petroleum Society of the Canadian Institute of Mining, Metallurgy & Petroleum until it became merged with SPE. He currently serves as Program Chairman and was the Secretary/Treasurer for the Dallas Chapter of the Society of Petroleum Evaluation Engineers. He also serves as a director for the Arkansas Section of SPE, and was founding Chairman for this Section.

Mr. Crouse served as an arbitrator for the National Association of Security Dealers Dispute (NASD) Resolution, where he is qualified as sitting as Chairman of the Panel from 1993 to 2007, until NASD became FINRA.

He has received numerous awards and honors throughout his career. He has authored more than 50 articles, 50 proceedings, many training manuals, videos, and has given over 700 speeches to the larger international petroleum community over his 32 year career having appeared on and being quoted by international and domestic print media and television media.

Aside from his life in the oil patch, Mr. Crouse is a music fan of *Classical Revolution* and a sports fan of the Texas Longhorns. Hook 'em horns!

---

## About Our Sponsor



Our venue sponsor for the 12:00 noon until 1:30 p.m. meeting on Thursday, September 24, 2009 at the Faulkner Country Natural Resources Center located at 110 S. Amity Road in Conway is **Champion Technologies**. Corporately located in Houston, Texas; Champion Technologies has been in business for more than fifty years. The Arkansas office is located at 222 North Pine Street, Suite 8 in Magnolia. Their telephone number is 870-234-3920.

The business (a Permian Mud Service company) started in West Texas and has become the second largest global oilfield production chemical company with staffed operations of about 2000 people. Their operations span more than 30 counties across the world.

They are a specialty chemical company offering innovative and environmentally acceptable solutions to oil & gas production problems.

For the 2005 calendar year Champion Technologies was recognized by the American Chemistry Council (ACC) with a Certificate of Honor for the United States, and the National Safety Council (NSC) honored them with 223 awards in five categories.

For more information about Champion Technologies, visit their website at: [www.champ-tech.com](http://www.champ-tech.com). If you join us during our September SPE meeting, please thank Champion Technologies for being our venue sponsor.

---

## About Our Luncheon Sponsor



Our luncheon sponsor is PCS (Production Control Services). They are well positioned to assist companies in well optimization. Their products and services include plunger lift, gas lift, nitrogen generation and automation.

In May 2009 they were awarded a patent for their Sand Plunger. It is a self-cleaning plunger capable of lifting and removing sand, liquids, and other solids from the well. In June 2009 they were awarded a patent for their Liquid Aeration Plunger. It is ideal for wells that have high accumulations of loaded liquids.

They have more than two dozen service locations in the major oil and gas plays in the United States and Alberta, Canada. They are headquartered out of Frederick, Colorado and have an office in Arkansas at 1528 Highway 65 North in Damascus. The telephone number is 501-335-7500. For more information about PCS and their products and services, visit their website at: [www.pcslift.com](http://www.pcslift.com).

If you are able to join us for the September 24, 2009 meeting, take a moment to thank them for the great lunch. I know they will appreciate a call, an e-mail, or stop by if you are in the neighborhood, and let them know how much you enjoyed lunch.

## **SPE Central Arkansas Study Group 2009 – 2010 Officers**

Thanks to all our 2008 – 2009 officers for the outstanding job they did in creating and building a foundation for the Society of Petroleum Engineers' Study Group in Central Arkansas. However, we have much confidence in the newly elected officers that they will do an outstanding job as well. Below is the list of 2009 - 2010 officers:

Chairman: **Ron Walsmith**

Membership: **Michelle Whillocke**

Treasurer/Sponsorship: **Robert Walker**

Newsletter Editor: **Donna Gentry**

Social Chair: **Kammi Ledo**

Program Chair: **Sean Burke**

Publicity: **Jose "Tito" Abiseid**

Secretary: **Russell Gilbert**

Webmaster: **Judah Epstein**

At Large Members: **Judah Epstein, Michael Throvilson, and Kammi Ledo**

**Kammi Ledo** will also be assisting the program chair position.

Bios and contact information can be found on our website: [www.arkansas-spe.org](http://www.arkansas-spe.org).

---

### **Meet Our Publicity Officer**

Our publicity officer is **Jose "Tito" Abiseid**. He is the District Engineer for Weatherford Fracturing in Searcy, Arkansas. He manages the technical specialists/field engineers and fluid technicians, supports and participates in wellsite delivery of fracturing jobs, and provides technical assistance to Weatherford clients.

A native of Arkansas, born in Clinton, he graduated from the University of Arkansas with a degree in Chemical Engineering. Tito joined Schlumberger in Rock Springs, Wyoming as a field engineer, where he worked for 2 years before joining Weatherford.

His nickname *Tito* was given to him by his family when he was a baby. His father's name is Jose and his family called him Joseito which means 'little Jose.' It was changed to Tito and ever since then he has only gone by that name.

Tito became interested in this industry right out of college when he read about the experiences and rewards of working in the petroleum industry. He joined Schlumberger, as a field engineer in Wyoming. The job was challenging and taught him how to overcome difficult, operational and technical situations, something he would have never learned in an office setting. Also, working in the frozen, wind swept desert of southwest Wyoming was one of the most demanding environments a person can experience. He states, "When you are driving to work and the temperature reads -35°F, just getting out of the truck can be a challenge."

Some of his hobbies include fishing, golfing, hunting, working outside in the garden, and watching sports. When he does have free time, most of it is spent with his wonderful wife, Tosha, and their beautiful daughter, Karis. He also owns a couple of wild cats and a hyper dog.



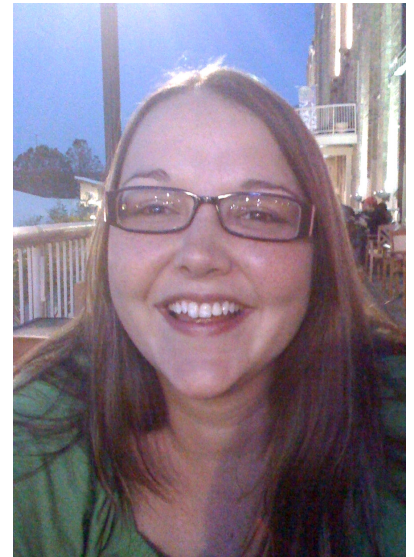
Some few fun facts in Tito's past is: he played baseball in high school, went sky diving in college, and always enjoyed science and engineering classes in high school and college.

As the Publicity Chairperson, his responsibilities include distributing fliers and emails to increase attendance and the variety of companies represented at the SPE Central Arkansas meetings. If you want an e-mail sent to you of the SPE Central Arkansas meeting flyer send your information to Tito at [Jose.Abiseid@weatherford.com](mailto:Jose.Abiseid@weatherford.com).

---

## **Meet Our Social Coordinator, Member At Large, and Assistant Program Chairperson**

Our Social Coordinator, Member at Large, and Assistant Program Chairperson is all wrapped up in one person: **Kammi Ledo**. She has worked with Cudd Energy Services in Vilonia, Arkansas for the past three years as a design engineer who works with their Frac, Coiled Tubing, Snubbing and Wireline Services.



Like Tito, Kammi also attended college at the University of Arkansas. She graduated in 2006 with a Bachelors of Science degree in mechanical engineering with a specialization in astronautics and aeronautics, with a minor in math. She is also IADC certified in well control.

She is married to Ryan Ledo, who also works for Cudd Energy Services. They have two children: Evan is 2 years old and Mackenzie is 9 months old. When she is not working she enjoys reading and spending time with her family.

As Social Coordinator, Kammi is planning some great social events for our SPE Central Arkansas Study Group. Some potential ideas she is considering is: Oilfield Happy Hour, Golf Scrambles, and/or Skeet Shoot. They all sound like great networking possibilities. If you have a social event suggestion or would like to sponsor an SPE Central Arkansas Study Group social event let Kammi know. She can be reached at [kledo@cudd.com](mailto:kledo@cudd.com).

Two additional positions Kammi holds are: Member at Large and Assistant Program Chairperson. Her duties in these positions state that she is ready to assistant any other officer in their responsibilities whenever needed. Thank you, Kammi, for your willingness to help, energy, and support.

---

## **SPE Central Arkansas Study Group Newsletter Contact Information**

Persons with questions, comments, or requesting items for consideration of publication in the Newsletter and/or wanting to receive electronic copies of the newsletter should contact the Newsletter Editor: Donna Gentry at [dgentry@awac-llc.com](mailto:dgentry@awac-llc.com).

---